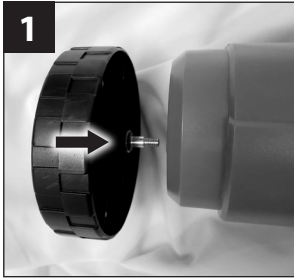




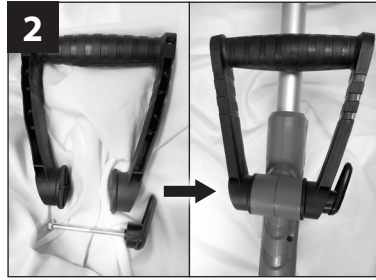
# Grout Groovy!

## ASSEMBLY GUIDE AND USER MANUAL

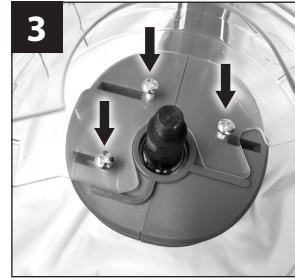
**5 STEP QUICK ASSEMBLY - GO TO [WWW.GROUTGROOVY.COM](http://WWW.GROUTGROOVY.COM) FOR HOW-TO VIDEOS.**



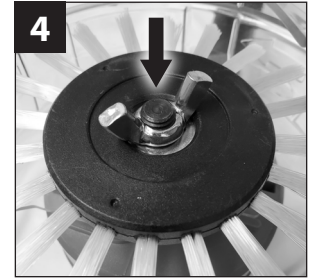
**1) Guide Wheel** – attach guide wheel using phillips screwdriver.



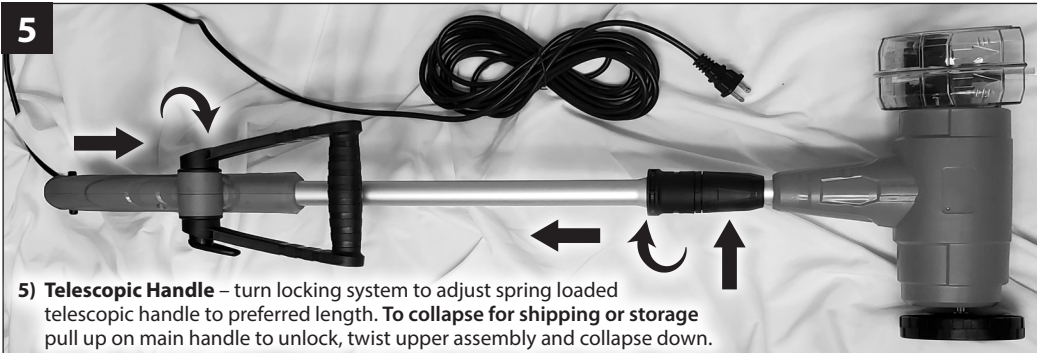
**2) Adjustable Handle** – attach adjustable handle with long bolt provided.



**3) Splash Guard** – attach splash guard with 3 screws (provided) using a #2 screwdriver.



**4) Brush Wheel** – attach brush wheel using wing nut provided.



**5) Telescopic Handle** – turn locking system to adjust spring loaded telescopic handle to preferred length. To collapse for shipping or storage pull up on main handle to unlock, twist upper assembly and collapse down.



**NEED HELP?  
GO TO:  
[GroutGroovy.com](http://GroutGroovy.com)  
for assembly and  
how-to videos, or  
call 866-269-9404.**

### 7 STEP QUICK START - HOW TO USE

**1) Mix hot water with your favorite liquid grout cleaning solution** into a spray bottle, apply to grout lines, then let it work into the grout for 5 to 10 mins before using the machine. Removes dirt when used properly. **\*DOES NOT REMOVE STAINS OR DISCOLORATION!\***

**2) Plug Grout Groovy** into a 120v power source

**3) Depress the operating handle** on the top of the machine

**4) As the cleaning brush rotates**, let it rotate and scrub the grout line and move it back and forth until dirt is removed (keep hands and feet away from rotating brush)

**5) There is no need to apply pressure** – the spinning wheel does all of the work to clean grout

– (when a small area is cleaned release the operating handle until the cleaning brush stops rotating)

**6) Mop up and dry** the small area that has been cleaned before moving to another area – (do not stand in water while using the machine)

**7) Use a small grout brush** for areas close to cabinets, walls and appliances to complete the cleaning process

## IMPORTANT SAFETY INSTRUCTIONS

When using an electrical appliance, basic precautions should always be followed, including the following: **READ ALL INSTRUCTIONS BEFORE USING THIS APPLIANCE**

**WARNING** – To reduce the risk of fire, electric shock, or injury:

- a)** Do not leave appliance when plugged in. Unplug from outlet when not in use and before servicing.
- b)** Do not use outdoors
- c)** Do not allow to be used as a toy. Close attention is necessary when used by or near children.
- d)** Use only as described in this manual. Use only manufacturer's recommended attachments.
- e)** Unplug before connecting brush.

**f)** Do not pull or carry by cord, use cord as a handle, close a door on cord, or pull cord around sharp edges or corners. Do not run appliance over cord. Keep cord away from heated surfaces.

**g)** Do not unplug by pulling on cord. To unplug, grasp the plug, not the cord.

**h)** Do not handle plug or appliance with wet hands.

**i)** Do not put any object into openings. Do not use with any opening blocked; keep free of dust, lint, hair, and anything that may reduce air flow.

**j)** Keep hair, loose clothing, fingers, and all parts of body away from openings and moving parts.

**k)** Turn off all controls before unplugging.

**l)** Use extra care when cleaning on stairs.

**m)** Do not use to pick up flammable or combustible liquids, such as gasoline, or use in areas where they may be present.

**n)** To Reduce the Risk of Fire, do not use a flammable or combustible liquid to clean a floor.

**o)** This appliance is provided with double insulation. Use only identical replacement parts. See instructions for Servicing of Double-Insulated Appliances.

**p)** Do not use with damaged cord or plug. If appliance is not working as it should, has beendropped, damaged, left outdoors, or dropped into water, return it to a service center.

**q)** Do not use with an extension cord.

## SAVE THESE INSTRUCTIONS.

## SERVICING OF DOUBLE-INSULATED APPLIANCES

In a double-insulated appliance, two systems of insulation are provided instead of grounding. No grounding means is provided on a double-insulated appliance, nor should a means for grounding be added to the appliance. Servicing a double-insulated

appliance requires extreme care and knowledge of the system, and should be done only by qualified service personnel. Replacement parts for a double-insulated appliance must be identical to the parts they replace. To reduce the risk of electric shock, this appliance has a

polarized plug (one blade is wider than the other). This plug will fit in a polarized outlet only one way. If the plug does not fit fully in the outlet, reverse the plug. If it still does not fit, contact a qualified electrician to install the proper outlet. Do not change the plug in any way.

**NEED HELP? GO TO [WWW.GROUTGROOVY.COM](http://WWW.GROUTGROOVY.COM) FOR ASSEMBLY & HOW-TO VIDEOS.**