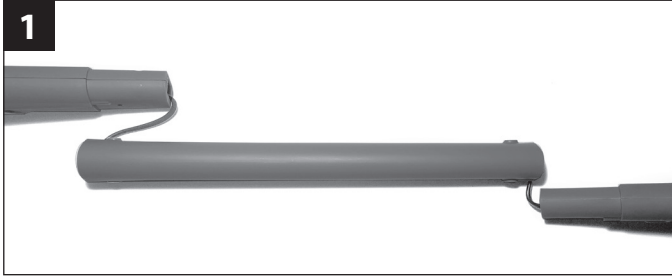




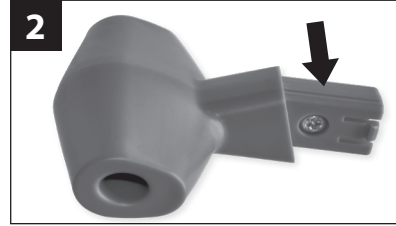
Grout Groovy!

ASSEMBLY GUIDE AND USER MANUAL

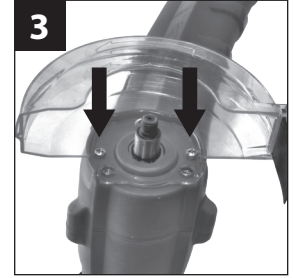
5 STEP QUICK ASSEMBLY - GO TO WWW.GROUTGROOVY.COM FOR HOW-TO VIDEOS.



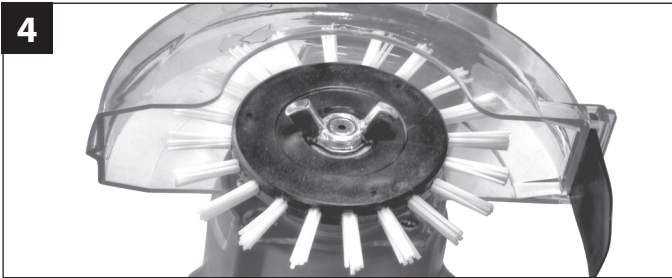
1) Handle Assembly – insert the 3 handle pieces into each other – be sure to push the wire into the handle slots. Pull any excess cord through from plug. Use the screws provided to complete the assembly.



2) Handle Assembly – Insert the long side of the handle shaft downward, away from you and toward the bottom of the machine. Press firmly down on the handle until the tabs “click” into place.



3) Cleaning Brush Guide Assembly – align the guide with the 2 holes in the motor hub – insert the provided screws into the holes and secure the guide.



4) Brush Wheel Assembly – insert cleaning brush wheel onto the motor shaft as shown – use the wing nut provided to secure the brush wheel. There's a hole in the motor shaft behind the brush wheel that you can insert a small screw driver if you need to tighten the wing nut.



5) Guide Wheel – insert the black guide wheel into the motor shaft, opposite the cleaning brush wheel – push hard until it snaps into place.



**NEED HELP?
GO TO:
GroutGroovy.com
for assembly &
how-to videos.**

7 STEP QUICK START - HOW TO USE

- 1) Apply a simple soap and water** mixture to a small area of grout using a spray bottle, mop or sponge and let it sit for at least 10 mins
- 2) Plug Grout Groovy** into a 110v power source
- 3) Depress the operating handle** on the top of the machine
- 4) As the cleaning brush rotates**, let it rotate and scrub the grout line and move it back and forth until dirt is removed (keep hands and feet away from rotating brush)

- 5) There is no need to apply pressure** – the spinning wheel does all of the work to clean grout – *(when a small area is cleaned release the operating handle until the cleaning brush stops rotating)*
- 6) Mop up and dry** the small area that has been cleaned before moving to another area – *(do not stand in water while using the machine)*
- 7) Use a small grout brush** for areas close to cabinets, walls and appliances to complete the cleaning process

IMPORTANT SAFETY INSTRUCTIONS

When using an electrical appliance, basic precautions should always be followed, including the following: **READ ALL INSTRUCTIONS BEFORE USING THIS APPLIANCE**

WARNING – To reduce the risk of fire, electric shock, or injury:

- a)** Do not leave appliance when plugged in. Unplug from outlet when not in use and before servicing.
- b)** Do not use outdoors
- c)** Do not allow to be used as a toy. Close attention is necessary when used by or near children.
- d)** Use only as described in this manual. Use only manufacturer's recommended attachments.
- e)** Unplug before connecting brush.
- f)** Do not pull or carry by cord, use cord as a handle, close a door on cord, or pull cord around sharp edges or corners. Do not run appliance over cord. Keep cord away from heated surfaces.
- g)** Do not unplug by pulling on cord. To unplug, grasp the plug, not the cord.
- h)** Do not handle plug or appliance with wet hands.
- i)** Do not put any object into openings. Do not use with any opening blocked; keep free of dust, lint, hair, and anything that may reduce air flow.
- j)** Keep hair, loose clothing, fingers, and all parts of body away from openings and moving parts.
- k)** Turn off all controls before unplugging.
- l)** Use extra care when cleaning on stairs.
- m)** Do not use to pick up flammable or combustible liquids, such as gasoline, or use in areas where they may be present.
- n)** To Reduce the Risk of Fire, do not use a flammable or combustible liquid to clean a floor.
- o)** This appliance is provided with double insulation. Use only identical replacement parts. See instructions for Servicing of Double-Insulated Appliances.
- p)** Do not use with damaged cord or plug. If appliance is not working as it should, has been dropped, damaged, left outdoors, or dropped into water, return it to a service center.
- q)** Do not use with an extension cord.

SAVE THESE INSTRUCTIONS.

SERVICING OF DOUBLE-INSULATED APPLIANCES

In a double-insulated appliance, two systems of insulation are provided instead of grounding. No grounding means is provided on a double-insulated appliance, nor should a means for grounding be added to the appliance. Servicing a double-insulated

appliance requires extreme care and knowledge of the system, and should be done only by qualified service personnel. Replacement parts for a double-insulated appliance must be identical to the parts they replace. To reduce the risk of electric shock, this appliance has a

polarized plug (one blade is wider than the other). This plug will fit in a polarized outlet only one way. If the plug does not fit fully in the outlet, reverse the plug. If it still does not fit, contact a qualified electrician to install the proper outlet. Do not change the plug in any way.

NEED HELP? GO TO WWW.GROUTGROOVY.COM FOR ASSEMBLY & HOW-TO VIDEOS.